



**Bell Way, Kingswood, Maidstone, Kent, ME17 3QH**  
**Price £400,000**

\*\*\*GUIDE PRICE £400,000 TO £425,000\*\*\*EXTENDED THREE BEDROOM BUNGALOW IN EXCELLENT ORDER INCLUDING A NEW BOILER IN A SOUGHT AFTER RESIDENTIAL DEVELOPMENT

This excellent bungalow is situated in the desirable village of Kingswood, served by a general store, community hall, parish church, junior school and benefits from picturesque country walks. The larger village of Lenham is some 2.5 miles distance, where there is a comprehensive range of amenities including a London line station. Maidstone, the county town of Kent, is approximately 6-miles distance offering a wide variety of shops, restaurant and entertainment.

Offering spacious and adaptable accommodation, the home is in excellent order. including a brand new boiler The property comprises a spacious lounge and a kitchen diner with ample space for dining with french doors opening onto the rear garden . There are three generously sized bedrooms and a modern family bathroom suite

Externally, the bungalow benefits from a private driveway providing ample off-road parking for several vehicles and a neatly enclosed rear garden offering a good degree of privacy.

Viewing is highly recommended. Call Page and Wells Loose Office today and book your viewing to avoid missing out



## Hallway

Lounge 16'9" x 10'3" (5.13m x 3.13m)

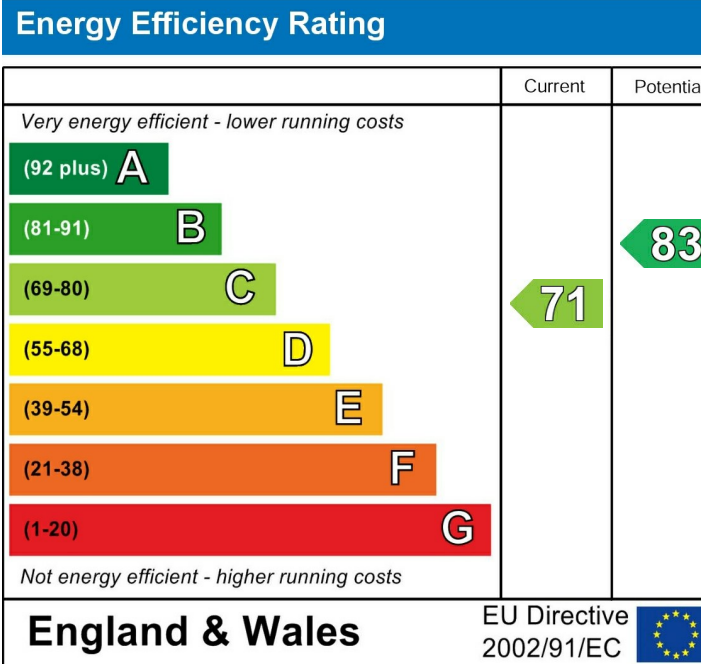
Kitchen/Dining Area 26'10" x 11'10" (8.19m x 3.62m)

Bedroom 1 17'6" x 10'2" (5.35m x 3.11m)

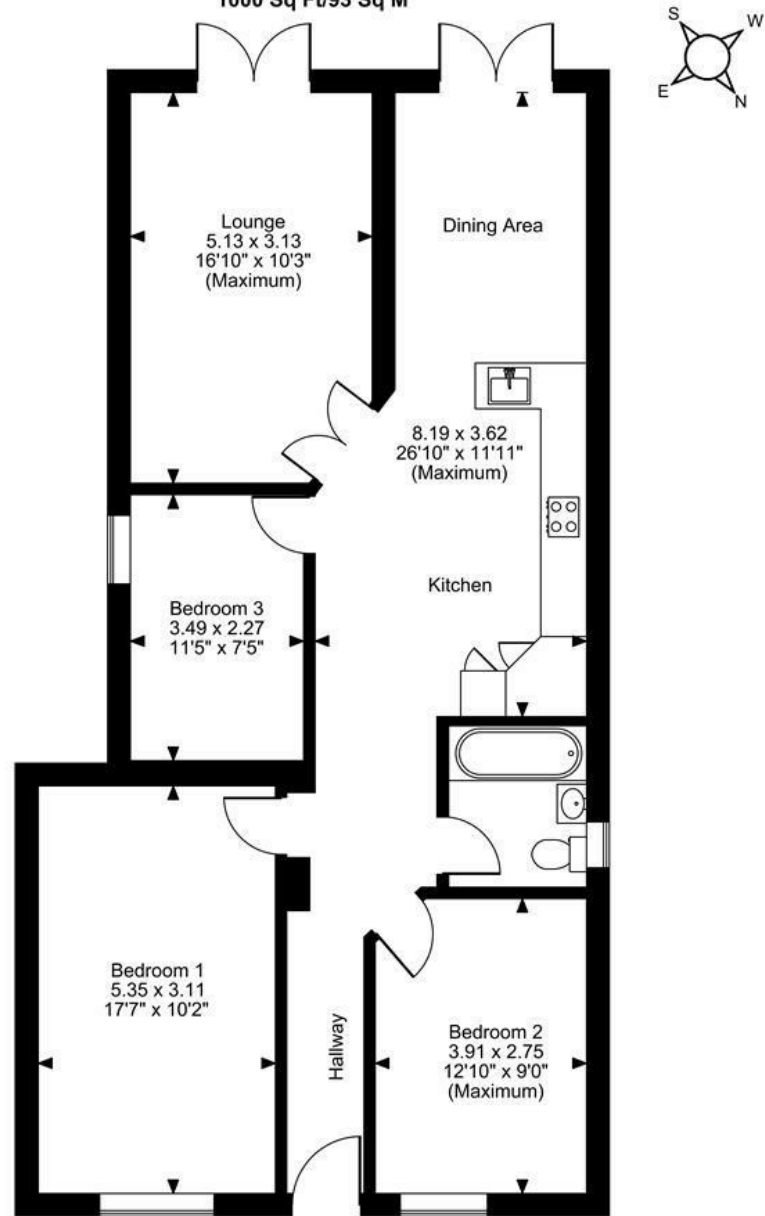
Bedroom 2 12'9" x 9'0" (3.91m x 2.75m)

Bedroom 3 11'5" x 7'5" (3.49m x 2.27m)

## Bathroom



Bell Way, Kingswood, Maidstone, Kent  
Approximate Gross Internal Area  
1000 Sq Ft/93 Sq M



Ground Floor

**FOR ILLUSTRATIVE PURPOSES ONLY - NOT TO SCALE**

The position & size of doors, windows, appliances and other features are approximate only.

© ehouse. Unauthorised reproduction prohibited. Drawing ref. dig/8636111/SLU

